



職業安全健康局  
Occupational Safety and  
Health Council

Occupational Safety & Health Council, Hong Kong SAR, China

Certifying Centre for Safe Community Programs

On behalf of the WHO Collaborating Centre on Community Safety Promotion,  
Department of Public Health Sciences Division of Social Medicine, Karolinska Institute, Sweden



**Name of the Community:** WONG TAI SIN

Country: CHINA

Number of inhabitants: 423,521 (2006, By-census Statistics, HKSAR)

Programme started year: 2007

International Safe Communities Network Membership: Designation year: 2011

**Full application available:**

<http://www.safecommunity.hk/download/SafeCommHK/131/WTSDHSC1.pdf>

**For further information contact:**

Name: Ivy TANG (Honorary Secretary)

Institution: Secretariat, Wong Tai Sin District Healthy and Safe City

Address: 124 Shatin Pass Road, Kowloon

City: Hong Kong                      Country: China

Phone (country code included): (852) 9444 6431              Fax: (852) 3517 3688

E-mail: [wts\\_hsc@yahoo.com.hk](mailto:wts_hsc@yahoo.com.hk)

**The programme covers the following safety promotion activities:**

**For the age group**

*Children 0-14 years:*

- Children & Adolescents Special Services Working Group – encourage toddler safety & anti-drug campaigns;
- Safety & Health Program for Pre-school Children

*Youth 15-24 years:*

- Adolescent's Anti-drug & Fight Crime Carnival ( since 2006)
- “CPR & AED Training for High School Students” 2010;
- “Fight Crime” Basket ball competition
- Anti-drug Musical performance since 2009
- “ Fresh Express Ambassadors” & Fresh Express Community Integrated Anti-drug Scheme 2009-2010
- Anti-drug programmes organized by Wong Tai Sin Alliance Against Drug Abuse

*Adults 25-64 years:*

- Community Education & Promotion Working Group – to popularize safety issues

*Elderly 65+ years:*

- Elderly Services Working Group – provide continuous health & safety support;
- “ Safe & Healthy Residential Home Accreditation Scheme”;
- “Community Fall Prevention Scheme” cum Tai Chi Promotion Performance;
- Wong Tai Sin Fall Prevention Project for the Elderly – exhibition & reinforcement
- Wong Tai Sin District Elders Protection Project

**At the following environments:**

*Home:*

- “Safe & Healthy Estate Accreditation Scheme”;
- Quality Building Management Competition since 1999
- “Year End Clean Up Operation”
- “Cleanest Estate Award Scheme”

*Traffic:*

- “Road Safety Working Group” – follow up recommendations on Road Safety Survey (2008 2009) <http://www.districtcouncils.gov.hk/wts/chinese/welcome.htm>
- “Wong Tai Sin Road Safety Day” (2005 – 2010)
- “Wong Tai Sin Road Safety Patrol for the Elderly” since 2002

*Occupational:*

- Electrical & Mechanical Services and Occupational Safety seminars since 2009
- Visits to Occupational & Health Gallery 2010
- Safety Quiz 2010
- International Safe Workplace Program (ISWP) : Hospitals (2011/2012)
- “Healthy & Safe Hospitals : OSH & Staff Wellness in Hospitals”;
- Hospital Accreditation (ACHS) 2012/2013

*School:*

- International Safe School Accreditation Scheme
- “Happy Coach Leadership Workshops” since 2008
- “Know Drug No Drug” Program
- Medical Care Experience in Our Lady Of Maryknoll Hospital

*Sports:*

- Green Promotion Basket Ball Competition
- “Say No To Drugs” Taekwondo performance by young people

*Leisure:*

- Environmental protection : “Tree Management”
- Green & Tree Planting Projects
- Flower Blossom for 2008 Beijing Olympic Games
- Rosella Harvesting Festival
- Insight Hong Kong Scheme” on Environmental protection

*Natural Disaster:* the consequences (human injuries) related to Natural Disaster. (example Tsunami Warning System, earthquake safe houses)

- Prevention of Human Swine Influenza
- Prevention of Hand, Foot and Mouth disease

*Others:*

- Community Diagnosis Working Group – provide insights & directions for forward planning in safety promotion;
- Rehabilitative Planning Working Group - promulgating barrier-free facilities for citizens;

**Violence prevention** (intentional injuries):

- Publicity Campaign on “Strengthening Families & Combating Crime” since 2006
- “Caring Home Together- Community as Our Family” Project since 2009
- Family Ambassadors Program 2006-2009
- “strengthening Families & Combating Violence” : Neighbourhood Support for a Harmonious Community since 2006
- “Elderly & Junior Police Call Fight Crime Ambassador Scheme” since 2007
- “ Family Community Cohesion Scheme” since 2009

**Suicide prevention** (self-inflicted injuries):

- “Happy Living Community Campaign” & “Happy Coach Leadership Workshops” : promoting positive psychology in community for all age groups;
- Publicity Campaign Against Suicide since 2006

**Programs aiming at ”High risk-groups”:**

- “Community Fall Prevention Scheme”



Resurface of the ramp way to reduce risk of slip/fall

- High Risk Elderly support Program
- Safety Projects for high risk elders
- Program in support of International Day of Persons with Disabilities in Wong Tai Sin District
- Fire Drill & Fire Safety Talks since 2006
- Fire Safety Ambassador Scheme since 1998
- Wong Tai Sin Fire Station Open Day cum Fire Safety Carnival since 2006
- “Corruption Prevention activities”
- Anti-mosquito Pioneer campaign
- Anti-Rodents Campaign

**Surveillance of injuries:** Domestic (~35%); Industrial (~25%); Sports (~6%); Traffic (~6%)

Numbers per year: ~ 3,000 p.a.

Population base: 423,521 (2006, By-census Statistics, HKSAR)

Started year: 2005

**Publications:** (Scientific)

**Produced information material, pamphlets:**

“Wong Tai Sin District Healthy & Safe City” Community Diagnosis Report November 2010

## **Staff**



**Board of Directors**

Number: 1

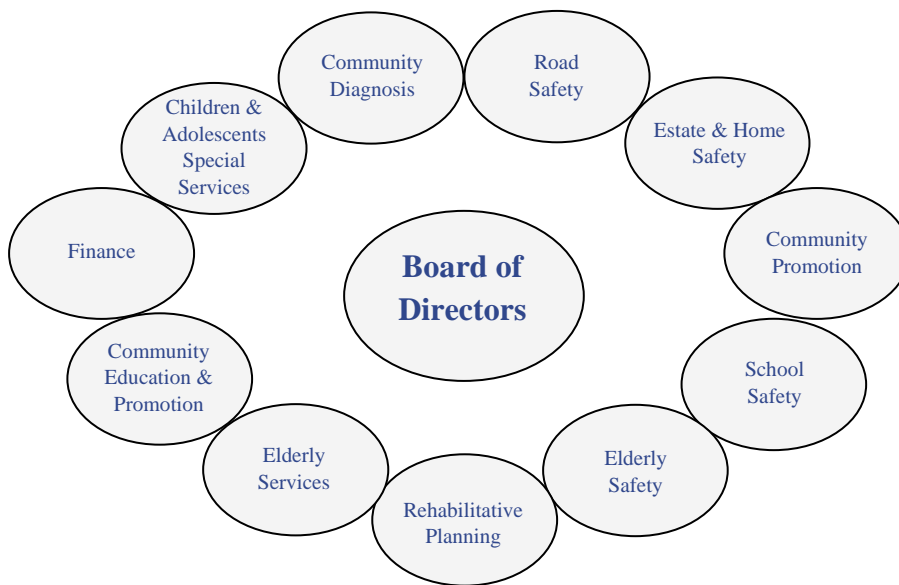
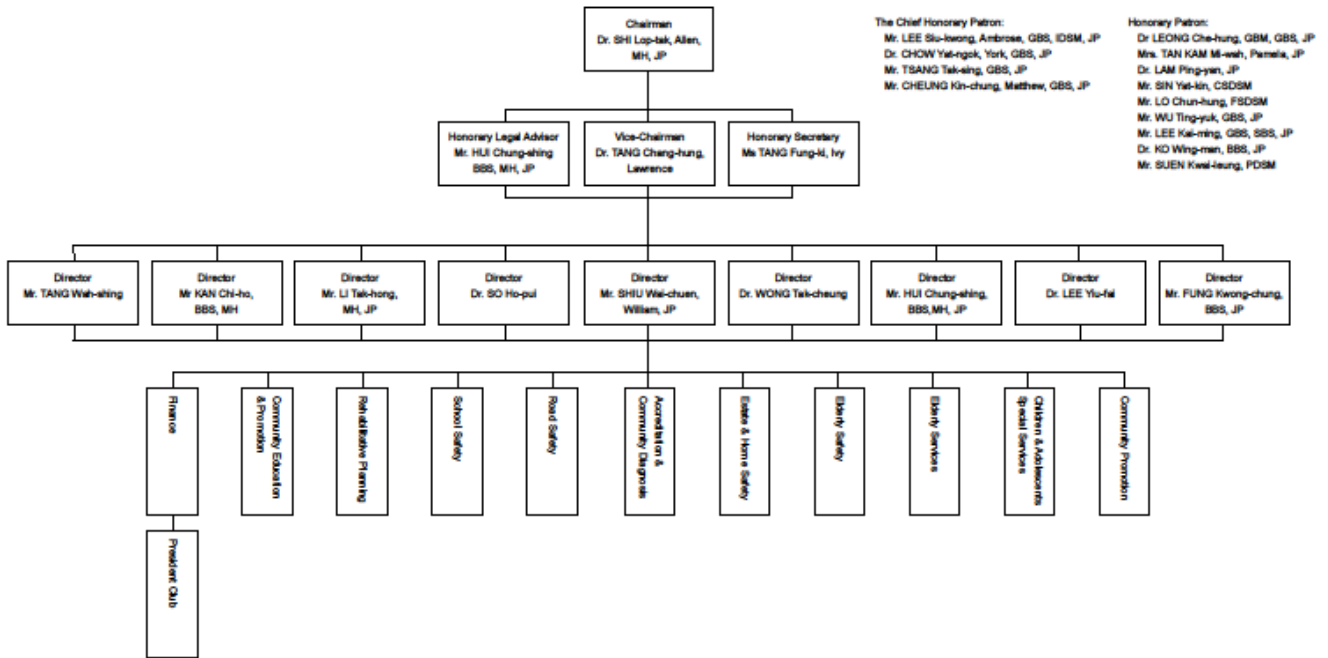
Professions: part-time or full-time: 1 Full-time Executive

Permanent: 1 Full-time

*Organization:*



**Wong Tai Sin District Healthy and Safe City  
Organization Chart**



*Specific intersectoral leadership group:*

- Wong Tai Sin District Home Affair Office;
- Wong Tai Sin District Council
- Tung Wah Group Hospitals Wong Tai Sin Hospital
- Our Lady of Maryknoll Hospital

*General public safety/safety promotion group:*

- Sik Sik Yuen
- HK Occupational Safety & Health Council
- East Kowloon District Resident's Committee
- Rehabilitation Advisory Committee, Labour & Welfare bureau
- District Facilities Management Committee
- Wong Tai Sin District Recreation & Sports Council

**International commitments:**

Study visits:

- Beijing Chao Yang District Safe Community
- Sai Kung Healthy & Safe City, HKSAR
- Kwai Tsing Safe Community & Healthy City Limited, HKSAR

Participation in Safe Community conferences: Korea & Hong Kong

**The leader:**



Dr. Allen SHI Lop-tak MH JP  
Chairman